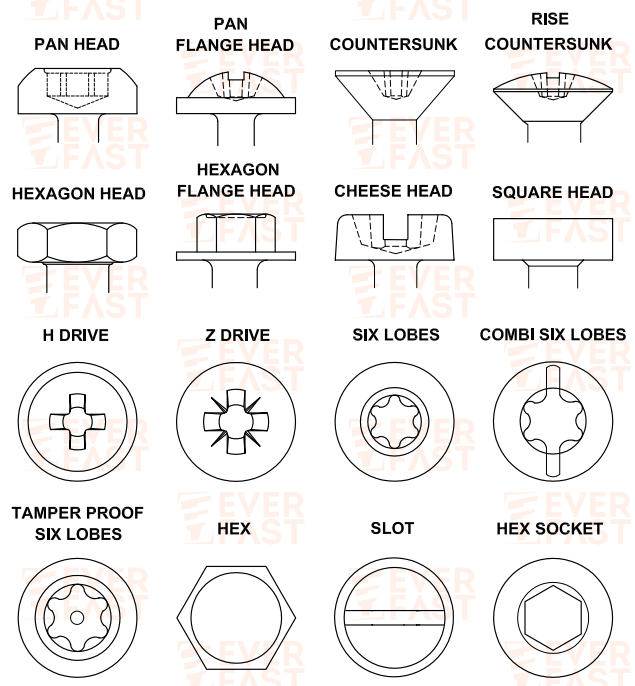
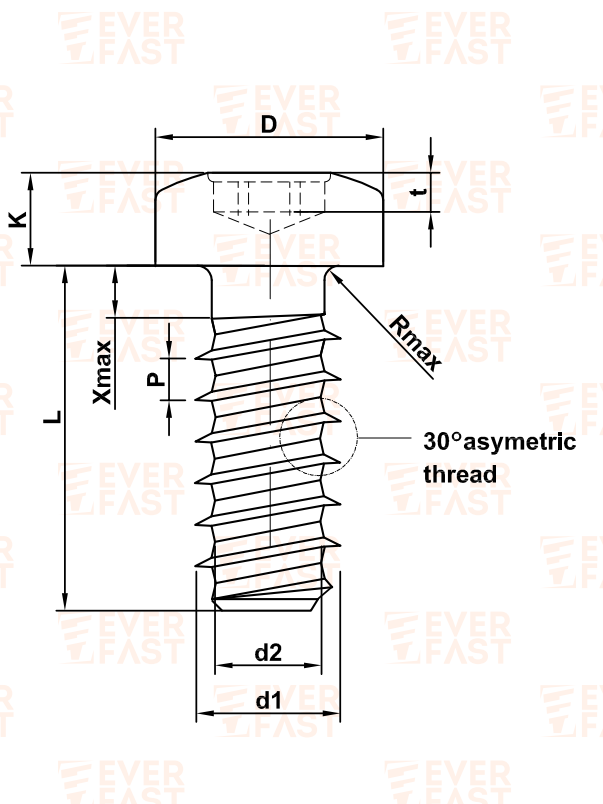




EF-Lite

EF-LITE screws have very special designed thread which ensures optimum metal fitting to light metals.

- Designed excellent assembly for light metal, aluminium etc.
- Asymmetric thread enables stronger tightening and loosening torques
- Reduces radial stresses
- High resistance to pull-out forces
- Minimizes clamp load loss



All the EverFast treatments are carried out in full respect of the environment, in compliance with the RoHS and Reach standards, and are free of chromium (VI).

Surface treatments: white, yellow, black, iridescent high-strength zinc plating, zinc-nickel plating, zinc-iron plating, nickel plating, copper plating, tin plating, geomet coating, sealing, lubrication, dehydrogenation, self-locking, stainless steel polishing, blacking - burnishing.

Other treatments on request.