

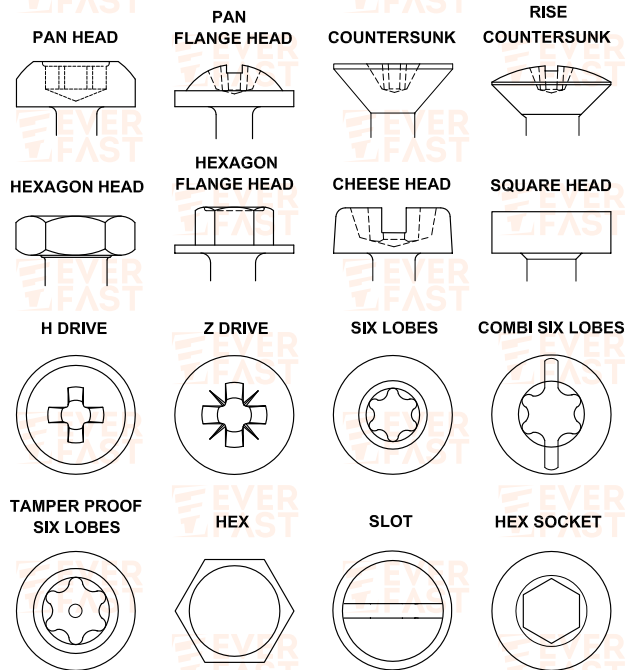
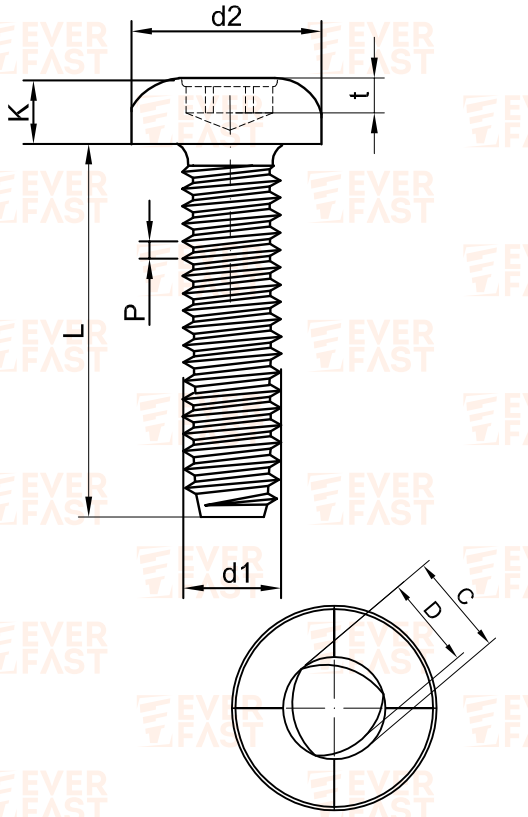


ever-fast.com

EF-TITE

EF-TITE Screws have a triangular shank that presses tightly as it forms threads, so screws resist loosening in soft metals such as brass, aluminum, and copper. These screws have generous lobulation at the screw point for easy entry and optimum thread forming action .

- Designed excellent assembly for metal
- Low end load
- Strong tapped hole formed
- High strip-to-drive ratio
- Superior vibration-resistant
- Eliminate cleaning of chips and burrs



All the EverFast treatments are carried out in full respect of the environment, in compliance with the RoHS and Reach standards, and are free of chromium (VI).

Surface treatments: white, yellow, black, iridescent high-strength zinc plating, zinc-nickel plating, zinc-iron plating, nickel plating, copper plating, tin plating, geomet coating, sealing, lubrication, dehydrogenation, self-locking, stainless steel polishing, blacking - burnishing.

Other treatments on request.